



**HOFFMAN**

## Electrical Interlock Defeater



Rev. B © 2018 Hoffman Enclosures Inc. PH 763 422 2211 • nVent.com/HOFFMAN P/N 99401489

87568928



**RSPSupply - 1-888-532-2706 - <https://www.RSPSupply.com>**

[See the product details here](#)

## INTRODUCTION

Hoffman electrical interlock defeaters are for use with Hoffman electrical interlocks; catalog numbers: A-EK115, A-EK230, A-EK460, A- EK115NDH, A-EK230NDH, A- EK460NDH.

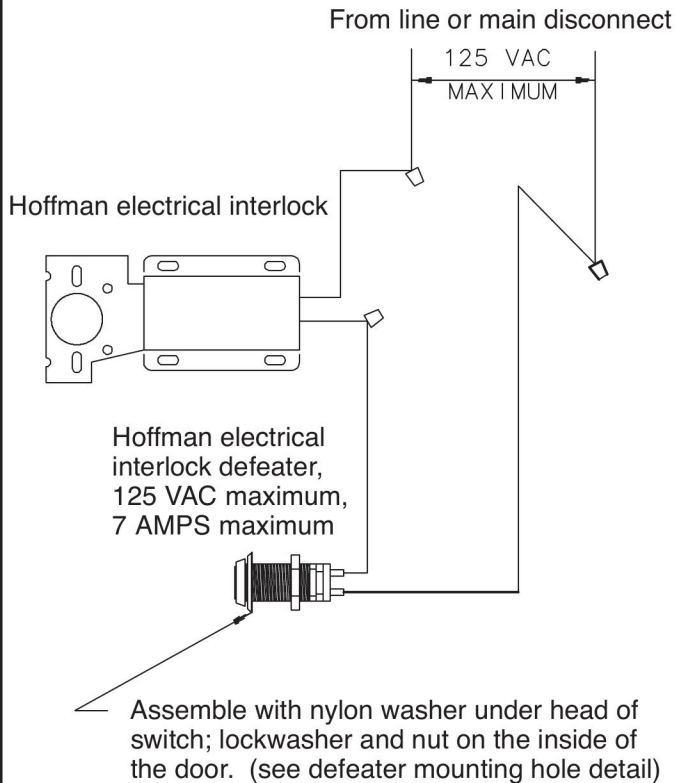
This defeater is a key-operated, momentary, contact switch, with contacts normally closed. The switch provides a means of interrupting the circuit to the electrical interlock. By turning the key clockwise to operate the switch, the enclosure door can then be opened without disconnecting the power source to the enclosure.

## **WARNING**

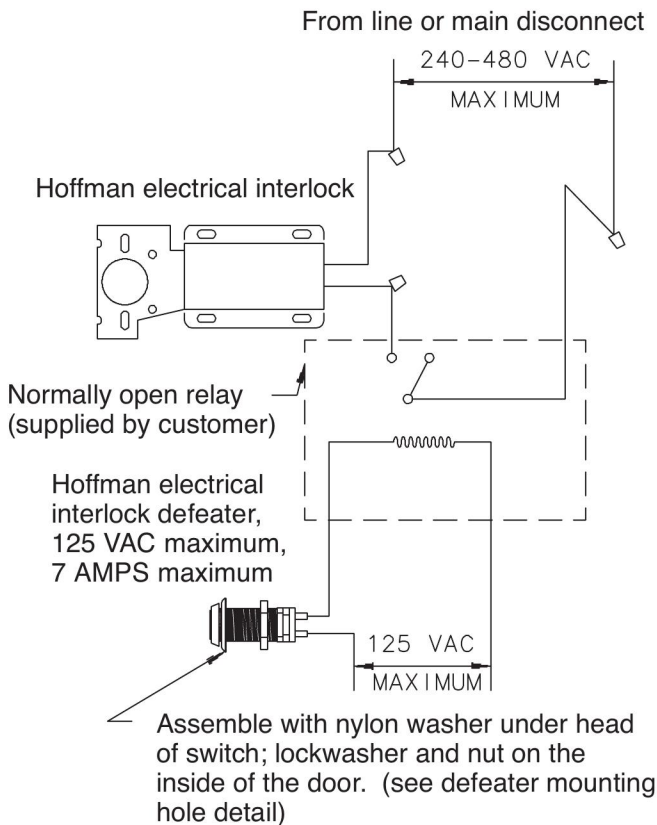
To avoid electric shock, do not energize any circuits before all internal and external electrical and mechanical clearances are checked to assure that all assembled equipment functions safely and properly.

Use this defeater with Hoffman interlocks only. Use with any other interlocks may cause defeater to not function safely or properly.

# WIRING DIAGRAM 120 VOLT

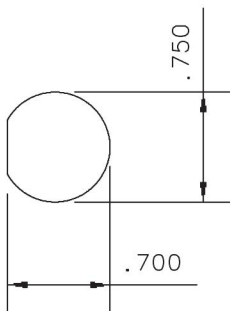


# WIRING DIAGRAM 240 VOLT, 480VOLT

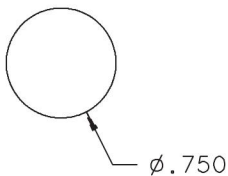


## DEFEATER MOUNTING HOLE

Punched Hole  
(preferred)



Drilled Hole



# NOTES



**HOFFMAN**

